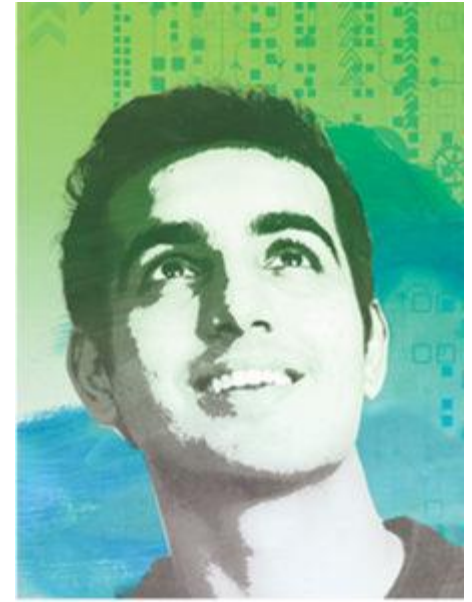


IEEE students



Who are IEEE Students?

- **An international body of innovative members and volunteers** who are digital natives interested in enhancing their professional image, expanding their global network, connecting with peers and giving back to their community.

We are:

- 100,000+ student and graduate student members
- 25% of the membership of IEEE
- In 100+ countries
- At 2000+ Student Branches



Do you know?

- **How to ensure your IEEE Member Profile is up-to-date?**
 - Login to your IEEE account (annually) and be sure your personal information is accurate (address, email, school name, graduation date, etc.)
- **How to locate your IEEE Member number?**
 - Login to IEEE account to obtain your member number and remember to save it 😊. Download your Membership Certificate via [IEEE Collabratec](#).
- **How to find other IEEE Student Branches?**
 - Visit students.ieee.org and search on the worldwide map for a listing
- **How to find professional IEEE Members?**
 - Visit the Member Directory via IEEE Collabratec.
 - Search [IEEE Rosters](#) (volunteers only) to locate names and emails of members and volunteers.



What do IEEE Student Members want?

Student Members Want...	The IEEE provides its members...
Access to career and employment resources	Continuing education through a variety of e-learning courses.
Remain technically current through educational resources and programs	Free bi-monthly copies of IEEE Potentials Magazine (the only IEEE publication for students); ability to compete in a variety of contests and for awards.
Expand the network beyond your school	Access to travel grants (for local and global conferences); access to funding opportunities for a variety of activities, projects, and events!

Note: these results were gathered from the 2016 member segmentation study.



Connect with us



Global Student Exchange Community

<https://ieee-collabratec.ieee.org/>



IEEE Student Channel

<https://ieeetv.ieee.org/>



IEEE Students

www.facebook.com/IEEESTUDENTS

IEEE
students



Beyond the Student Branch

IEEE Member Directory via 

Access to all active IEEE student and professional members allowing for networking and collaboration.

The IEEE Member Directory is exclusively accessible via IEEE Collabratec using the people search function.

Mentoring and resume features can also be found here!



IEEE students



Watch this 3 minute video about IEEE Students!

Your voice at IEEE - The IEEE Student Activities Committee (SAC)

The IEEE SAC is comprised of volunteers from all around the world who are responsible for student programs and activities. These volunteer members provide important viewpoints and information, and represent the voice of the 100,000+ IEEE Student and Graduate Student Members worldwide.

The mission is to:

"deliver a common, high quality IEEE Student member experience globally, for lifelong, professional success through IEEE membership."



Student Activities at your local IEEE Section

As an IEEE Student Member, you are automatically a part of a larger network of units that advance the mission of IEEE – your local IEEE Section. IEEE Sections provide their members a venue to share technical, professional, and personal interests locally, with their fellow student and professional IEEE members who live and/or work in close proximity. It is our hope that the local Section can help IEEE to become vital to your Student Branch.

These two positions at your local Section as they are there to support you:

- ✓ Section Student Representative (SSR)
- ✓ Section Student Activities Chair (SSAC)

Strengthening the relationship between local Student Branches and their parent Sections is critical to the future of the IEEE. Your Branch Chair and Counselor can help!



Remain technically current with



IEEE Xtreme is a global challenge in which teams of IEEE Student members compete in a 24-hour time span against each other to solve a set of programming problems. The competition provides IEEE Student Members a challenge to embrace teamwork to develop for career success in technology fields. Join the IEEE Xtreme communities on IEEE Collabratec and Facebook!

Who participates in IEEE Xtreme?

- 8,300+ students
- 650+ institutions participate
- 70+ countries
- 100,000+ Facebook followers
- 900+ Proctors
- 350+ Public Relations Volunteers



Are you reading Potentials Magazine?

Potentials is the only IEEE magazine for undergraduate and graduate student members that address global issues, career development topics, and other topics, emphasizing the value of continuing IEEE membership after graduation.

- Explores career strategies
- The latest in research
- Technical developments
- Relates theories to practical applications
- Highlights technology's global impact
- Generates international forums
- Sharing of diverse ideas about the profession



Financial Support

Members

TRAVEL GRANTS
EDUCATIONAL SCHOLARSHIPS
HUMANITARIAN PROJECTS
CONFERENCES
AWARDS

Volunteers

STUDENT PROFESSIONAL
AWARENESS ACTIVITIES
VIRTUAL AND IN-PERSON
LEADERSHIP TRAINING
STUDENT BRANCH
ACTIVITIES/PROJECTS
REGIONAL CONFERENCES



Compete for recognition and prizes!



1. Member Get a Member (MGM)

Recruit new IEEE Students by sharing your experience with your friends and colleagues. You can earn awards for you and your local IEEE Student Branch!



2. IEEE Into Focus Photo Contest

Share your IEEE photos each month for a chance to be featured in IEEE promotional materials and win great prizes!



3. Gift of Membership

Holiday or birthday coming up for someone you love? Give them the gift of IEEE Student Membership.

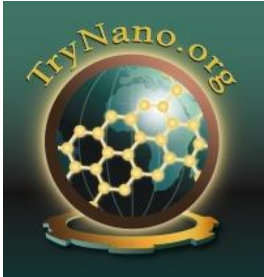


4. IEEE Day

Celebrate with all IEEE Students worldwide, every year, in October. Participate in local events, collaborate on a project and share your photos with us for a chance to win!

IEEE Provides Educational Resources

www.ieee.org/education



Trynano.org



Itunes University



IEEEXplore Digital Library



IEEE.tv



Try computing.org

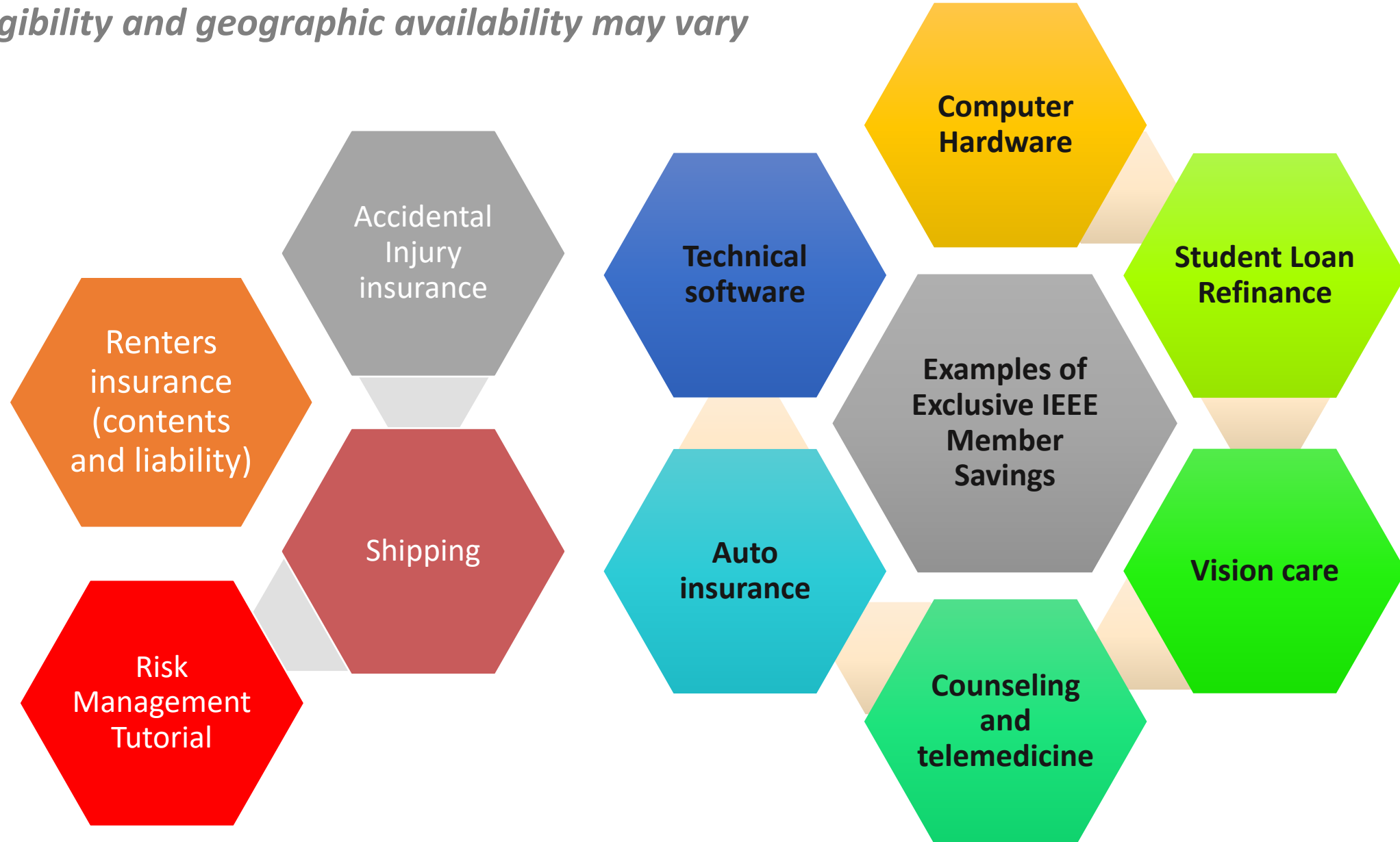


IEEE E-learning Library



Co-branded Member Discounts*

** eligibility and geographic availability may vary*



Get involved with IEEE HAC/SIGHT!



Humanitarian Activities
Committee

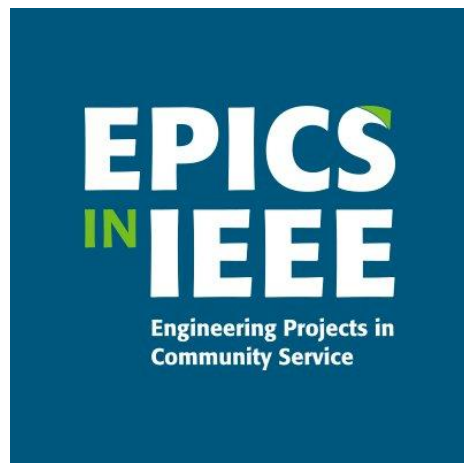
IEEE SIGHT

Special Interest Group on
Humanitarian Technology

- Benefits to engaging in humanitarian technology and sustainable development activities at IEEE:
 - Learn and develop professional skills through participation in projects and events
 - Connect with like-minded IEEE members around the world
 - Work toward a greater purpose on projects that align with your personal motivations and skill set
 - Make a real difference in your local community!
- Join with IEEE [HAC/SIGHT](#) to Get Involved!
 - [Become an IEEE SIGHT member](#) (add it to your IEEE student membership; it's free!)
 - [Form a SIGHT Group](#) at your IEEE Student Branch to assess needs in your local community, apply for financial resources, and implement a sustainable technological solution
 - Volunteer on a Committee
 - Check out the free, online resources from HAC/SIGHT on the [IEEE Learning Network \(ILN\)](#) and [SIGHT website](#) that equip participants with a basic understanding of humanitarian technology and sustainable development topics
 - Network with other members with similar interests through the HAC/SIGHT social media platforms
 - [Humanitarian Activities Committee Facebook page](#)
 - [SIGHT Facebook group](#)
- Questions? Write to sight@ieee.org



Did you know there are additional groups you can join?



ETA KAPPA NU
Electrical and Computer Engineering Honor Society

IEEE
students



The Virtual Speakers Bureau

- Choose from over 270 different topics – technical or professional
- Benefit from the experience of IEEE Members and Professionals
- A Virtual Speaker gives a presentation to your Student Branch
- Live, interactive, with Q & A session to follow
- Delivered in 16 different languages
- Available in all 10 IEEE Regions
- Free of charge
- <https://students.ieee.org/about-virtual-speakers/>



How to host a Virtual Speaker at your student event?



1 Check IEEE Students web site /Virtual Speakers

2 Review the speakers list and topics

3 Fill the application form and request a speaker



4 Virtual Speakers Bureau team will reach you and connect you with your speaker

5 Plan your event

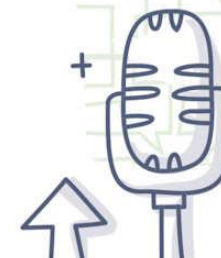
6 Discuss the time and details with your speaker



7 Set up any webinar platform for online presentation

8 Promote your virtual event

9 Host your virtual speaker



Don't forget to fill the form and give us feedback

IEEE students

The IEEE Student Branch Program

- Local IEEE Student Members attending a college/university
- Attend all IEEE student meetings, activities, programs
- Participation in competitions, awards, projects, community service
- Leadership development and training for volunteers



Recognize your Student Branch

Student branches are crucial to the growth and development of IEEE Student members. Student branches create a local network of students and give students the opportunity to meet and learn from fellow students, as well as faculty members and professionals in the field.

Your Student Branch can be recognized for several awards for their educational, technical, projects and professional activities including:

- Larry K. Wilson Regional Student Activities Award
- IEEE Regional Exemplary Student Branch Award
- IEEE Outstanding Branch Counselor and Branch Chapter Advisor Award
- The Darrel Chong Student Activity Award



What are the benefits of becoming a volunteer?

- ✓ Gain confidence by leading your peers
- ✓ Make a difference in your local community
- ✓ Meet new people and expand your network
- ✓ Become part of the larger IEEE community
- ✓ Hone your soft-skills through a variety of projects/activities
- ✓ Have fun and make new, life-long friends





IEEE Young Professionals are a group of IEEE members and volunteers who have graduated from their first professional degree within the past 15 years. It is an international, diverse community, whose members are interested in elevating their professional image, expanding their global network, connecting with peers locally and giving back to their community. Each year, over 25,000 students graduate and are “elevated” to Higher Grade / Professional Membership status.

Connecting Students and Young Professionals:

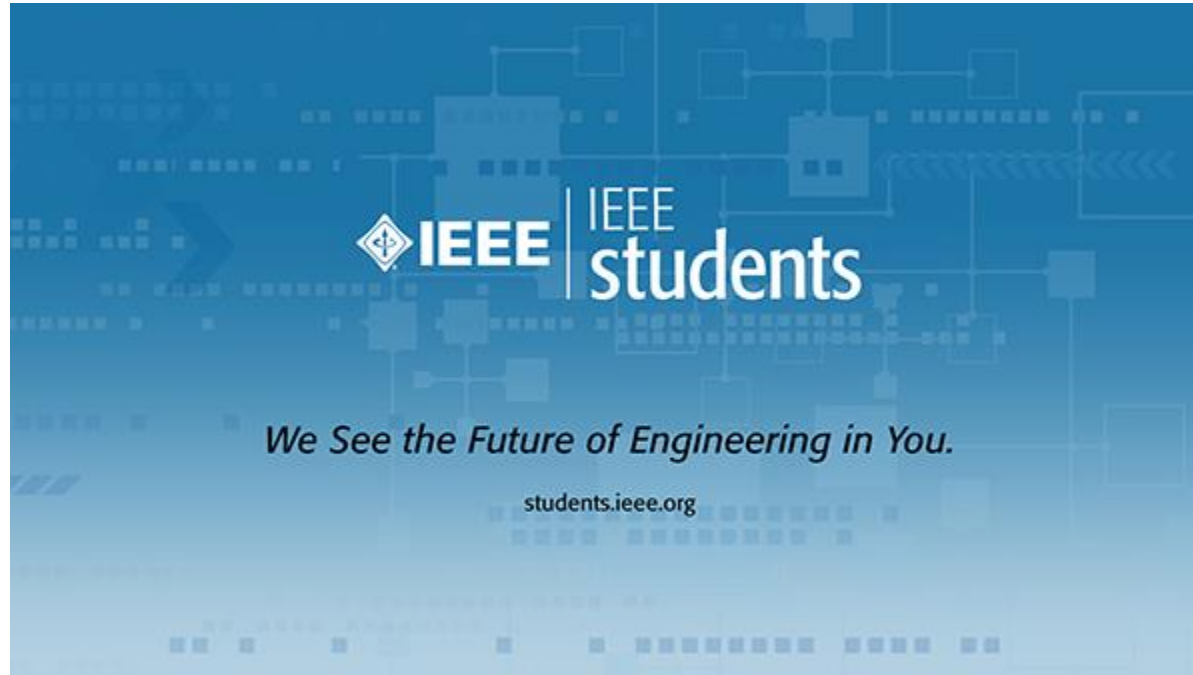
Local YP Affinity Groups and the local IEEE Section can collaborate with their local Student Branches to host an annual Student Transition Elevation Program (STEP) event. These events introduce graduating students to the YP Program and is the first step to building a lifelong and diverse professional network. Some examples of events can include:

- Meet-up Events
- STEP Program
- Signature Events
- SEED Funding



Welcome to the IEEE
Young Professionals Program

IEEE Student Volunteers



Student Branch Leadership

- As a member of the IEEE Student Leadership, you belong to an exclusive world-wide volunteer community which includes both students and professionals.
- As one of the leaders of your Student Branch, you are responsible for strengthening the relationship between your institution while also serving as the public face to your Student Branch members.
- You can be recognized by IEEE for the projects and programs that you lead!

Student Branch Operations

- The responsibility for administering Branch operations lies within your Student Branch Executive Committee. The Executive Committee should consist of all of the Branch Officers, sub-committee Chairs, and the Branch Counselor.
- This is essential for direct communication between your Region, Section and the IEEE Operations Center.



Student Branch Reporting

- Student Branch Reporting serves as a valuable historical document to aid future Student Branch leaders in their yearly planning.
- It includes the Branch finances, so it is important that the Student Branch Treasurer is involved in the preparation of the report.
- Be sure to involve your Branch Counselor as he/she will be required to approve the report before it is sent to the IEEE Operations Center.
- It's just 3 easy steps to report your Student Branch activities and newly elected officers yearly (bookmark these links!):

1. **Officers:** <https://officers.vtools.ieee.org/>
2. **Annual Plan:** <https://sbr.vtools.ieee.org/>
3. **Meetings/Events:** <https://events.vtools.ieee.org/>



Benefits of Reporting Activities

- Reporting demonstrates proof of meetings, events, and keeps IEEE informed your Branch leadership information.
- A record of all activities will be housed in our database for historical purposes and can be used for awards, etc.

Note:

- An incentive allotment of US\$100 is given if a Student Branch has 50 or more members. If a Student Branch has fewer than 50 members, the incentive is US\$50.
- In addition, an incentive rebate of US\$2 per Student or Graduate Student member (based on membership statistics as of 31 December of the previous year) is also given for reports received prior to the deadline.



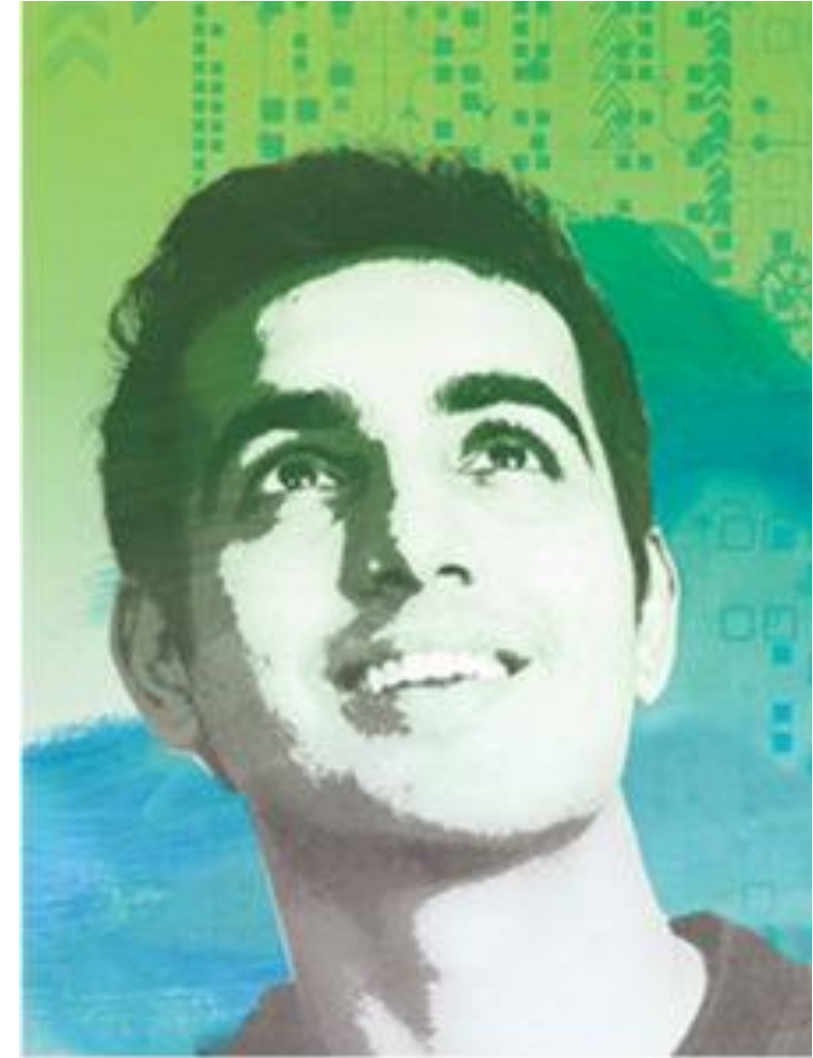
Changes to Annual Reporting

- **Student Branch Annual Plan**
 - Replaces the current Student Branch Activity Report
 - Opens 1 August annually
 - Closes 1 February annually
- Students should connect with their local Section to assist with developing yearly plan and ask for support/resources.

vTools Officer Reporting v2.3.0 has been released

- All new officer reports require a term end date be provided
- Term limit of six(6) years in a position will be enforced
- Note: View an officer's term dates by hovering cursor over the name displayed in the online roster page
- All new officer reports require a term end date be provided
- Term limit of six(6) years in a position will be enforced
- Note: View an officer's term dates by hovering cursor over the name displayed in the online roster page

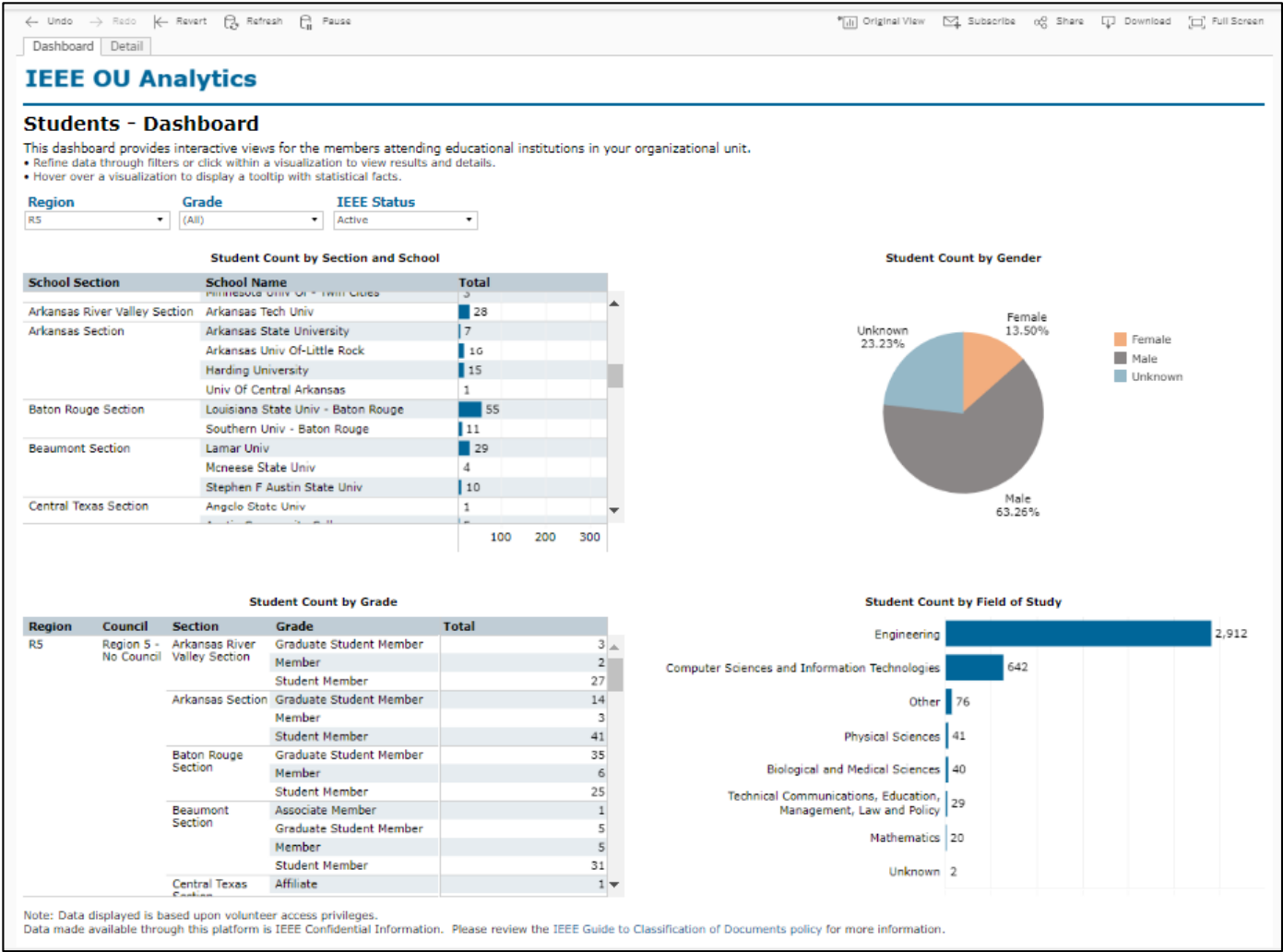
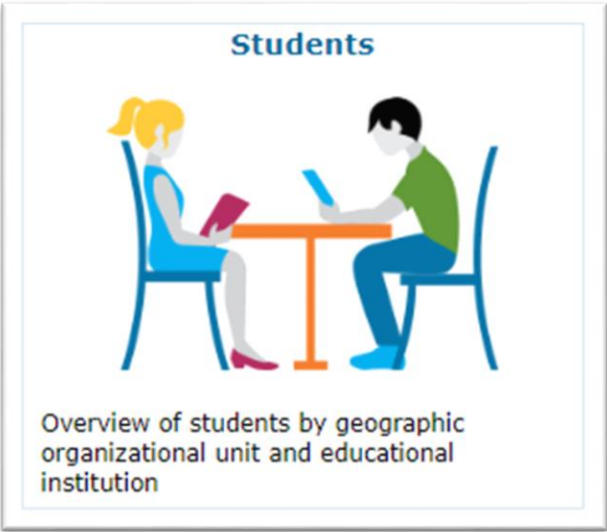
Note: if a Branch does not meet the minimum membership requirement of **10 members**, they risk losing their IEEE Student Branch status and being placed on probation in June, annually.



Key Resources for Student Volunteers

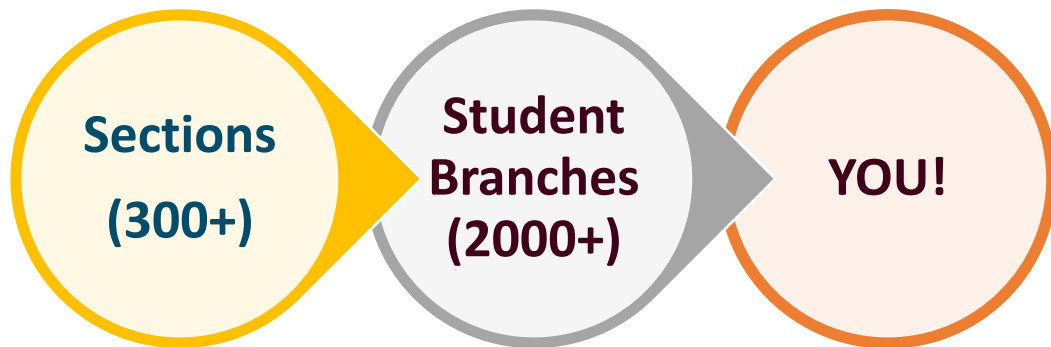
As a student volunteer, it is essential that you understand the tools that assist you with connecting with your branch members and local volunteers to support your efforts. Familiarize yourself through the various tutorials and trainings.

Student Branch Membership Data is available in [OU Analytics](#). Click on the Student tab.



Why connect with my section?

- Collaborate on local projects / initiatives
- Network with professional IEEE Members from industry, government, and academia
- Be mentored by engineering professionals
- Receive career guidance and support
- Engage with the larger IEEE network



3 steps to connecting

Step 1: Know your Section representation: rosters.ieee.org

- ✓ Section Student Activities Chair (SSAC)
- ✓ Section Student Representative (SSR)

Step 2: Involve your Section representation on the following:

- ✓ Coordination of Branch activities - be sure to log all activities in [vTools Events](#)
- ✓ Development of your [Branch Annual Plan](#) is due 1 February annually.
- ✓ Financial support for your initiatives

Step 3: Review the [Best Practices video](#) to learn more about the IEEE Section – Branch connection



Important Reminders

- Student Branches are officially under the local Sections' organizational structure
 - Similar to local chapters and affinity groups.
- To form a new Student Branch, approval is required from the Region Director and The Region Student Activities Coordinator. Section Chairs are informed of all new units within their boundaries.
- Rebates are based on students who attend schools within the Section.
- For Student Branch reporting and rebates:
 - All individual activities/events still need to be reported via [vTools Events](#)
 - All officers must be reported as they change via: <https://officers.vtools.ieee.org/>
- **Student Branch Annual Plan**
 - Launch date: August annually
 - Via the [Student Branch Reporting Tool](#)
 - Must be reported by 1 February annually to be eligible for rebates



IEEE Member and Geographic Activities

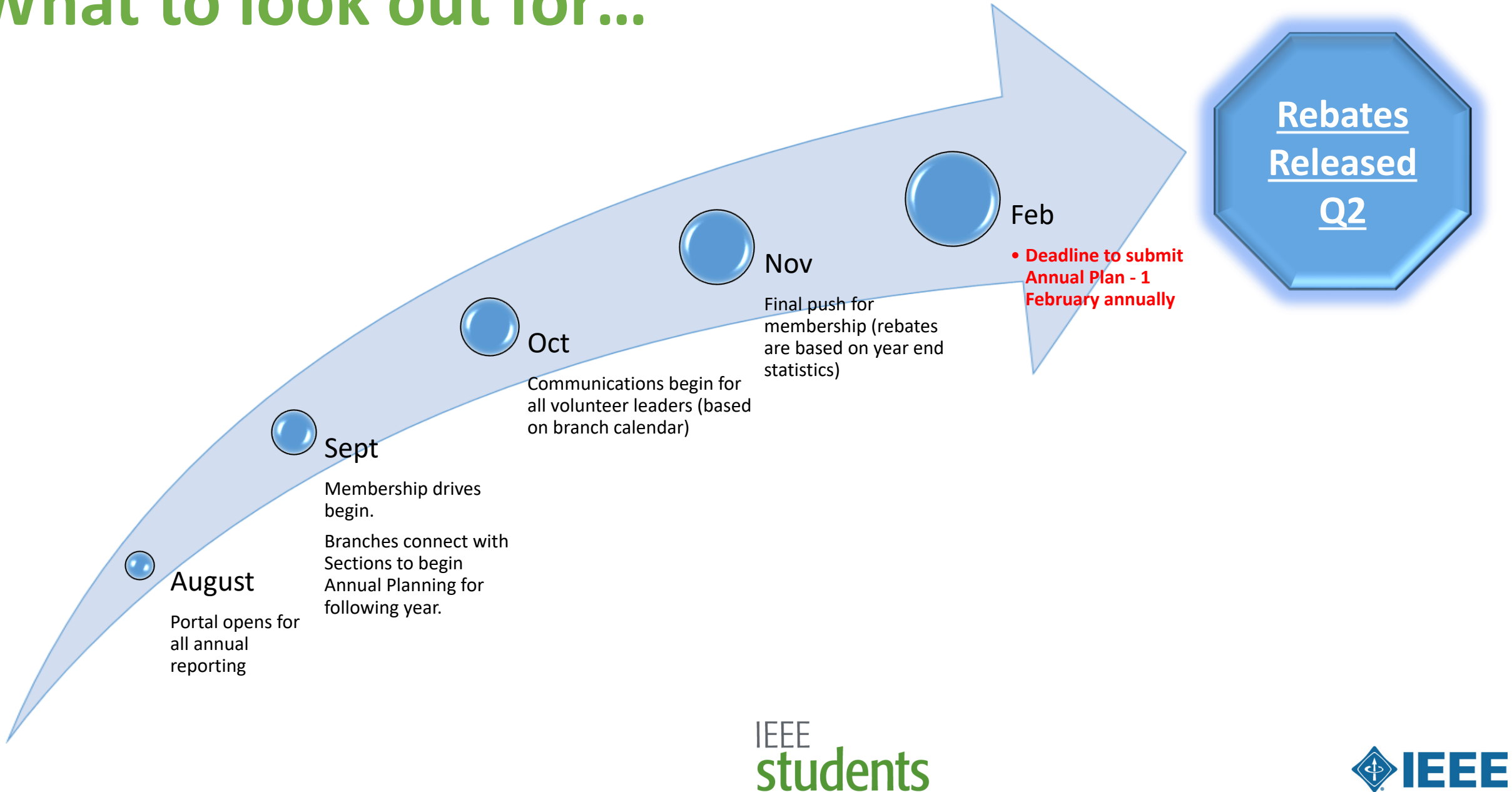
Operations Manual

[MGA Operations Manual](#)

Important Updates for Student Branches *Continued*

- **Section 9.4.F.1** – The Section Student Representative is exempt from the member grade requirement
 - They must still be an active IEEE member
- **Section 9.4.D.3** – Recommends the Section ExCom select:
 - A Section Student Activities Chair (SSAC)
 - Section Student Representative (SSR)
 - Both should be voting members of the Section ExCom.
- **Operations Manual Section 9.7.H** – Details the Student branch Reporting and Funds changes
 - Reporting timeline
 - Number of activities
 - Annual plan v. annual report
 - Branch Counselor no longer required to endorse

What to look out for...



Best Practices

Best Practices videos: <https://students.ieee.org/best-practices/>

- Host an annual “Welcome Back” or “End of School” event to welcome and farewell your members
- Collaborate with other IEEE Student Branches, Young Professionals, IEEE-Eta Kappa Nu (IEEE-HKN), and Women in Engineering groups
- Schedule speakers on technical or professional subjects. See SPA Program for more information
- Enter design competitions
- Organize field trips to industry
- Give tutorials to non-members
- Raise funds for charity or Student Branch projects (EPICS, SIGHT)
- Participate in IEEE conferences
- Publish a Student Branch newsletter
- Participate in engineering awareness programs

Student Resources

students.ieee.org

- ✓ Branch Formations
- ✓ Branch Calendar
- ✓ Web Hosting for Branches
- ✓ Membership Development Kits (Branch Chairs only)
- ✓ Funding
- ✓ Branding and Visual Identity
- ✓ Awards
- ✓ Funding
- ✓ SPA Program
- ✓ IEEEExtreme



Student Resources

- Volunteer Training - [Branch Leadership Training](#)
- Video Training - [Best Practices for Student Branches](#)
- Website - students.ieee.org
- Visual Identity - [Resources and Toolkit](#)



IEEE Support Staff – Student Services



Web: students.ieee.org

Email: student-services@ieee.org

IEEE
students

