

# Enhancing Section Engagement with Student Branches

**Nasser Kehtarnavaz**

**Chair, Region 5 Student Activities Committee**

**Region 5 Member Engagement Meeting  
July 30 and 31, 2020**



# IEEE Region 5

27 sections; 21,400+ members

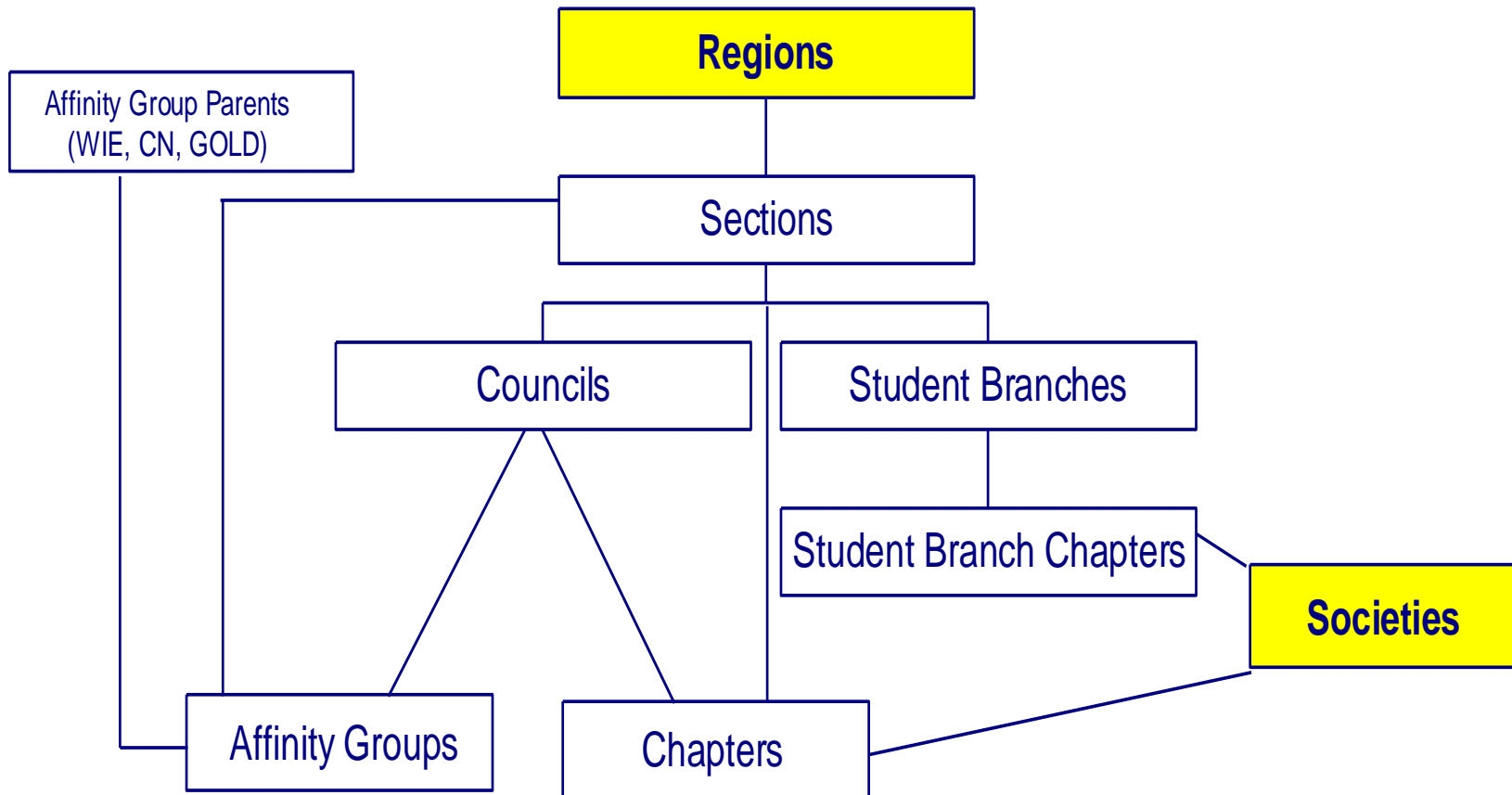
97 student branches

59 student chapters

44 student affinity groups



# Geographic & Technical Division Relationship



## Two key benefits of being or becoming IEEE student member (or IEEE membership in general)

1. IEEE membership provides tremendous networking opportunities; key to finding jobs and advancing professional careers
  - Enables establishing job/career related contacts through IEEE meetings, conferences, talks, chapters, etc.
2. IEEE membership provides access to a wealth of knowledge and technical materials
  - Enables staying up-to-date in a field and learning new fields

# Student Branch Officers

- Similar to other IEEE organizational units, the operation of a student branch is conducted by the following 4 required officers or positions chosen by the student branch:

Chair (President), Vice-Chair, Secretary, and Treasurer in consultation with a branch counselor/faculty advisor

- Other positions can be created as deemed appropriate by a branch, e.g. website, newsletter, recruiting new members, etc.

# Student Branches Encouraged to Connect to their Sections

1. Student branches to be made aware that the section has access to many IEEE members (professionals at companies and faculty members at other universities other than theirs) who can help student branches to establish connections
2. Student branches need to get to know their section chair and section university relations officer, if any, to seek their advice and assistance, e.g. putting them in touch with YP/WIE/TC leaders in the section for giving talks to their student branches

# Suggestion to Section Chairs to Enhance Engagement of Student Branches with Sections

Contact student branch officers in your section asking them to attend a presentation by your section – can be done virtually at the same time for all the student branches in your section.

What to cover in your presentation:

1. An overview of the section/officers and explaining that student branches are organization units within the section
2. Listing groups and chapters in the section and their contact information (YP, WIE, Technical Chapters, etc.)
3. Rebate and other financial support provided by the section to student branches for their activities

# Financial Support Provided by Section to Student Branches

- Student branches to be reminded to report the activities of their previous year ending Dec 31 (called annual activity) by the end of Feb via the **vTools** online utility
- Students branches to be made aware that this allows the section to receive a rebate of \$2 for each student member which can be passed onto student branches. It is worth emphasizing that if the annual activity report is not filed by a student branch in the section, the section may not be able to pass this rebate onto the student branch.



# Finding Student Branches and Their Officers in Sections

Two online tools for IEEE volunteers:

- 1. **vTools** is the tool for submitting reports, officers changes, event listing, voting, etc.
- 2. **OU Analytics** (previously done via SAMIEEE) is the tool for accessing member data

[Online demo of OU Analytics](#)

[How to look up student branches and officers in your section](#)

# Region 5 Student Activities Committee (RSAC)

- Do not hesitate to contact RSAC for student related issues
  
- Here are the committee members contact information:
  - \* For student competitions and SPAX activities, contact Dr. Abu Asaduzzaman - [abu.asaduzzaman@wichita.edu](mailto:abu.asaduzzaman@wichita.edu)
  - \* For student awards and officers/counselors updates, contact Mr. Robert Saunders - [rsaunder@uark.edu](mailto:rsaunder@uark.edu)
  - \* For R5 student information exchange forum at <https://www.facebook.com/groups/IEEERegion5/> contact R5 student representative, Mr. Fiaz Bhuiyan - [Fiaz.Bhuiyan@utdallas.edu](mailto:Fiaz.Bhuiyan@utdallas.edu)
  - \* For the information link <http://www.utdallas.edu/~kehtar/StudentActivitiesRegion5.html> or any other issue, contact Dr. Nasser Kehtarnavaz - [kehtar@utdallas.edu](mailto:kehtar@utdallas.edu)