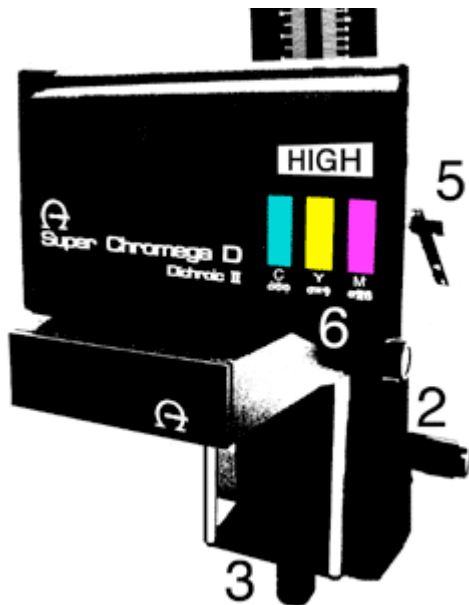


INSTRUCTIONS FOR USE OF SUPER CHROMEGA D 08/04

OMEGA 4 X 5 COLOR ENLARGERS

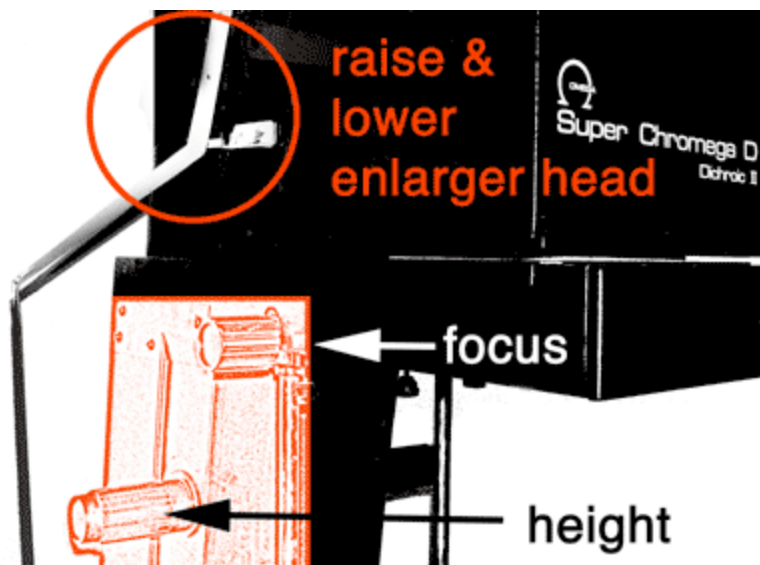
The 4x5 enlargers will allow for the printing of negatives larger than 35mm. Consult with the instructor IN ADVANCE regarding negative carriers and lenses for negatives larger than 35mm.

1-The top section of the enlarger head is raised or lowered by the lever on the left hand side of the enlarger. The enlarger head can be raised so the negative carrier can be removed from or inserted under the enlarger head. Secure the aluminum arm between the two metal notches on the left hand side. Be careful not to pull the arm too far forward. **Always lower the head when the enlarger is not in use to prevent dust from falling on the enlarging lens.**



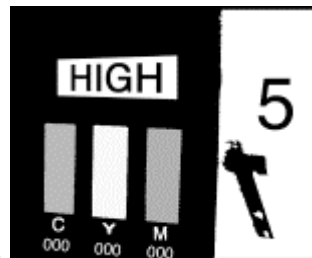
2-The enlarger is raised and lowered by the large **height adjustment** control on the left and right sides of the enlarger column. Rotate knob slowly when raising or lowering head. For **fine focus** rotate the focusing control that is positioned above the height adjustment control.

3-The **locking mechanism** on the enlarger column must be rotated to unlock or lock the enlarger in place. Be sure to secure the enlarger appropriately to avoid vibration when making oversized enlargements. Smaller enlarger heads must always be locked into position



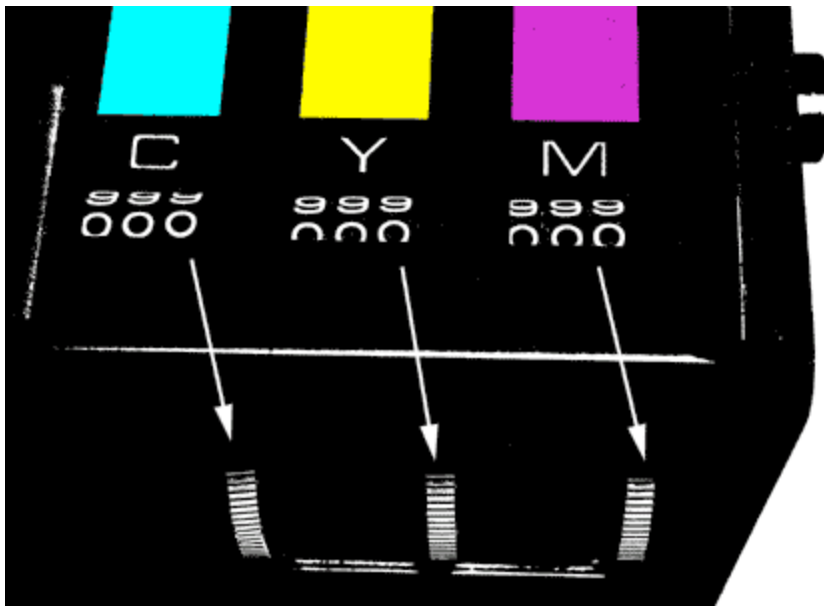
4-The negative carrier consists of two plates that form a sandwich. The plates nest together. Indentations in both plates match guides at the back of the enlarger. **The baseplate has a square guide that nestles into position above the enlarger lens.** Negative carriers are available for all film sizes. A larger lens must be used with medium format film (75-135mm lens) and large format film (135-160mm lens).

5-The lever at the right hand side of the enlarger head has three settings, high, low, and white. In general leave the setting at **HIGH**, which produces the greatest amount of light for color or variable contrast printing—unless your negative is thin, in which case try using the LOW setting. The WHITE setting is for the use of graded black and white papers, which do not require use of filters. In our classes the enlarger setting should be set on **HIGH** in



most situations.

6- The color filter controls are located **under the enlarger head on the right hand side.** Sometimes the counter skips. In that case a Zero position may be read as 10 or 20 yellow. Be careful not to force the counter. You may need to adjust your notes....i.e. a 10Y setting equals zero, a 20Y setting equals 10Y. The flaw in the counter will not adversely affect your work. Ask questions if you are confused by problems with the filter settings.



Dials: CYAN (always zero) YELLOW MAGENTA

PLEASE DON'T FORCE MECHANICAL PARTS.

UNPLUG YOUR ENLARGER when you are finished!

Also, the light switch controls power to some of the outlets in the small individual color darkrooms in the upstairs color processing lab.